



MONTHLY MEMBERSHIP PROGRESS REPORT

District 317 A

Results as of: 06/30/2019

GMT: VASUDEV VALAWALKAR

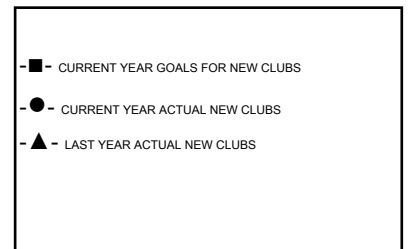
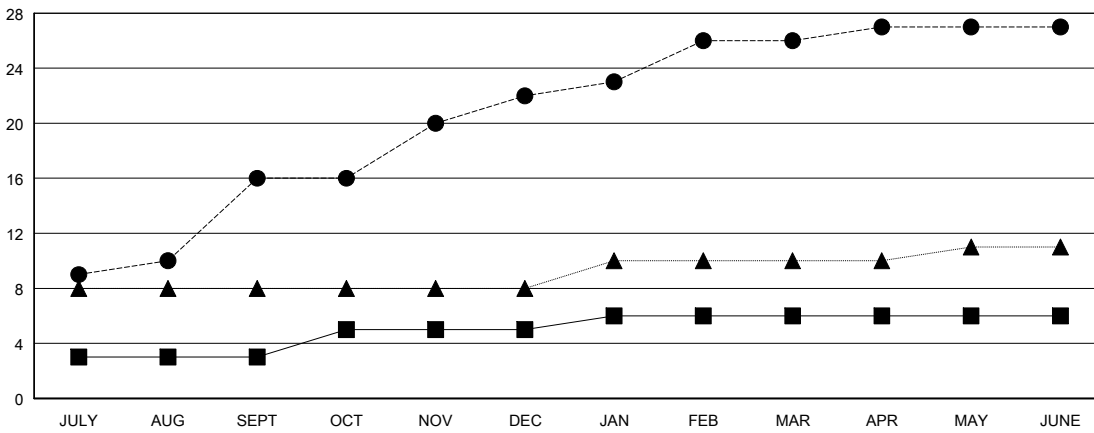
LOCATION INDIA

GMT CA

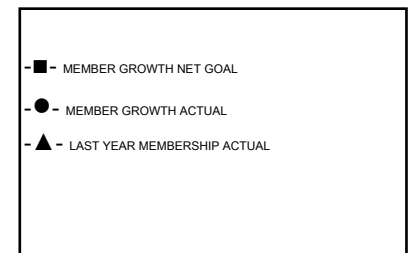
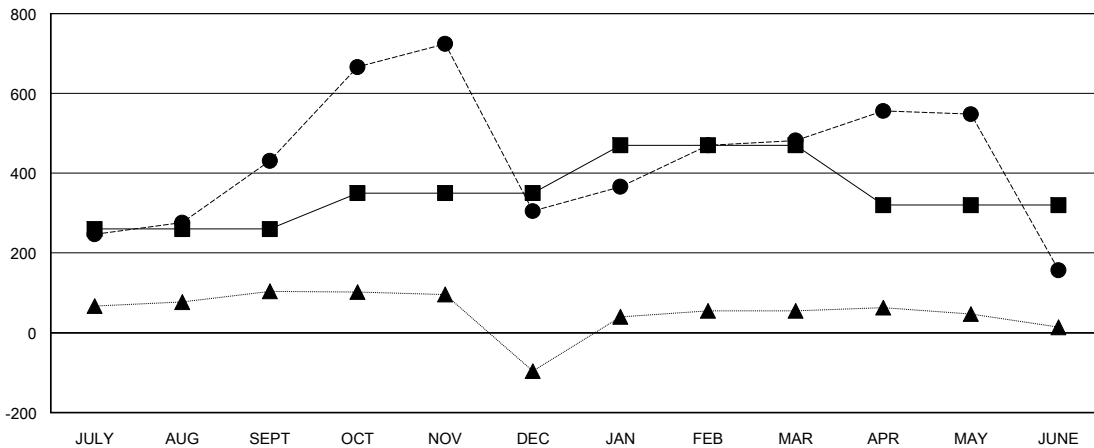
Clubs			
RESULTS FOR 2018-2019			
QUARTER	NEW CLUB GOAL	NEW CLUBS	DROPPED CLUBS
JULY/AUG/SEPT	3	16	1
OCT/NOV/DEC	2	6	4
JAN/FEB/MAR	1	4	0
APR/MAY/JUNE	0	1	4

Members			
RESULTS FOR 2018-2019			
QUARTER	MEMBER GROWTH NET GOAL	MEMBER GROWTH ACTUAL	DROPPED MEMBERS ACTUAL (including transfers)
JULY/AUG/SEPT	260	531	91
OCT/NOV/DEC	90	382	490
JAN/FEB/MAR	120	293	42
APR/MAY/JUNE	-150	218	537

GOALS AND ACTUAL NEW CLUBS CUMULATIVE



GOALS AND ACTUAL MEMBERS CUMULATIVE



DROPPED CLUBS: 9	109 CLUBS OF 147 ADDED 1 OR MORE NEW MEMBERS	<u>GENDER DISTRIBUTION</u> MALE 3,023 (66.35%) FEMALE 1,533 (33.65%) Women Percentage Fiscal Year Goal: 30%
<u>DROPPED MEMBERS</u> DECEASED 8 CLUB CANCELLED 201 OTHER 951 TOTAL 1,160	CLICK HERE FOR CUMULATIVE MEMBERSHIP DATA	TOTAL FAMILY UNIT MEMBERS 1,936 FAMILY MEMBERS PAYING HALF DUES 1,030